

Discriminating Traces with Time^{*}

Saeid Tizpaz-Niari, Pavol Černý, Bor-Yuh Evan Chang,
Sriram Sankaranarayanan, and Ashutosh Trivedi

University of Colorado Boulder, USA
{saeid.tizpazniari, pavol.cerny, evan.chang,
srirams, ashutosh.trivedi}@colorado.edu

Abstract. What properties about the internals of a program explain the possible differences in its overall running time for different inputs? In this paper, we propose a formal framework for considering this question we dub *trace-set discrimination*. We show that even though the algorithmic problem of computing maximum likelihood discriminants is NP-hard, approaches based on integer linear programming (ILP) and decision tree learning can be useful in zeroing-in on the program internals. On a set of Java benchmarks, we find that compactly-represented decision trees scalably discriminate with high accuracy—more scalably than maximum likelihood discriminants and with comparable accuracy. We demonstrate on three larger case studies how decision-tree discriminants produced by our tool are useful for debugging timing side-channel vulnerabilities (i.e., where a malicious observer infers secrets simply from passively watching execution times) and availability vulnerabilities.

1 Introduction

Different control-flow paths in a program can have varying execution times. Such observable differences in execution times may be explainable by information about the program internals, such as whether or not a given function or functions were called. How can a software developer (or security analyst) determine what internals may or may not explain the varying execution times of the program? In this paper, we consider the problem of helping developers and analysts to identify such explanations.

We identify a core problem for this task—the *trace-set discrimination* problem. Given a set of execution traces with observable execution times binned (or clustered) into a finite set of labels, a *discriminant* (or classifier) is a map relating each label to a property (i.e., a Boolean formula) satisfied by the traces assigned to that label. Such a discriminant model can then be used, for example, to predict a property satisfied by some trace given the timing label of that trace.

This problem is, while related, different than the profiling problem. In performance profiling, the question is given an execution trace, how do the various parts of the program contribute to the overall execution time? The trace-set discrimination problem, in contrast, looks for distinguishing features among multiple traces that result in varying execution times.

^{*} This research was supported by DARPA under agreement FA8750-15-2-0096.

Crucially, once we can explain the timing differences in terms of properties of traces (e.g., what functions are called only in traces with long execution time), the analyst can use the explanation to diagnose the possible timing side-channel and potentially find a fix for the vulnerability. Section 2 shows on an example how a security analyst might use the tool for debugging information leaks.

In this paper, we consider the discriminating properties of traces to be Boolean combinations of a given set of atomic predicates. These atomic predicates correspond to actions that can be observed through instrumentation in a training set of execution traces. Examples of such predicates are as follows: (1) Does the trace have a call to the function f in the program? (2) Does the trace have a call to the `sort` function with an array of more than a 1000 numbers? In our case study, we consider atomic predicates corresponding to the number of times each function is called.

Concretely, our overall approach is to first obtain a set of execution traces with information recorded to determine the satisfiability of the given atomic predicates along with corresponding execution times. Then, we cluster these training traces based on their overall execution times to bin them into timing labels. Finally, we learn a trace-set discriminant model from these traces (using various techniques) to capture what is common amongst the traces with the same timing labels and what is different between traces with different labels.

In particular, we make the following contributions:

- We formalize the problem of *trace-set discrimination* with timing differences and show that the algorithmic problem of finding the maximum likelihood conjunctive discriminant is NP-hard (Section 3).
- We describe two methods for learning trace-set discriminants: (1) a direct method for inferring the maximum likelihood conjunctive discriminant using an encoding into integer linear programming (ILP) and (2) by applying decision tree learning that each offer different trade-offs (Section 4). For instance, decision tree algorithms are designed to tolerate noisy labels and work effectively on large data sets but do not have formal guarantees. On a set of microbenchmarks, we find that the methods have similar accuracy but decision tree learning appears more scalable.
- We present three case studies in identifying and debugging timing side-channel and availability vulnerabilities, armed with a prototype tool DISCRIMINER that performs label clustering and decision tree-discriminant learning (Section 5). These case studies were conducted on medium-sized Java applications, which range in size from approximately 300 to 3,000 methods and were developed by a third party vendor as challenge problems for identifying and debugging such side-channel vulnerabilities. We show that the decision trees produced by DISCRIMINER are useful for explaining the timing differences amongst trace sets and performing this debugging task.

In our approach, we need to execute both an instrumented and an uninstrumented version of the program of interest on the same inputs. This is because a trace of the instrumented program is needed to determine the satisfiability of the atomic predicates, while the execution time of interest is for the uninstrumented

program. Therefore we need to assume that the program is deterministic. Since timing observations are noisy due to many sources of non-determinism, each trace is associated with a *distribution* over the labels. For instance, a trace may have a label ℓ_1 with probability 0.9 and label ℓ_2 with probability 0.1.

Like with profiling, we also assume the test inputs that drive the program of interest to expose interesting behavior are given. It is a separate problem to get such interesting inputs: whether the analyst has logged some suspicious inputs from a deployment or whether the developer generates tests using random or directed test-case generation.

2 Timing Side-Channel Debugging with DISCRIMINER

In this section, we demonstrate by example how DISCRIMINER can be useful in identifying timing side-channel vulnerabilities and suggesting ways to fix them. We use an application called SnapBuddy¹ as an example. SnapBuddy is a Java application with 3,071 methods, implementing a mock social network in which each user has their own page with a photograph.

Identifying a Timing Side-Channel with Clustering. The analyst interacts with the application by issuing download requests to the pages of various users to record execution times. Figure 1 shows a scatter plot of the running times of various traces with each trace represented by a point in the figure. The running times are clustered into 6 different clusters using a standard k -means clustering algorithm and shown using different colors. We see that for some users, the download times were roughly 15 seconds, whereas for some others they were roughly 7.5 seconds. This significant time differential suggests a potential timing side-channel if the difference can be correlated with sensitive program state and thus this differential should be investigated further with DISCRIMINER.

To see how such a time differential could be a timing side-channel, let us consider an attacker that (a) downloads the public profile pages of all users and learns each download time, and (b) can observe timing between packets by sniffing the network traffic between legitimate users. If the attacker observes user Alice downloading the page of another user whose identity is supposed to be a secret and sees that the download took approximately 7.5 seconds, the attacker can infer that Alice downloaded the page of one of the six users corresponding to the six squares (with time close to 7.5 seconds) in Figure 1. The timing information leak thus helped the attacker narrow down the possibilities from hundreds of users to six.

Debugging Timing Side-Channels with Decision Tree Learning. How can the analyst go about debugging the SnapBuddy application to eliminate this timing side-channel? We show how DISCRIMINER can help. Recall that the analyst downloaded pages of all the users. Now the same download queries are

¹ From DARPA STAC (www.darpa.mil/program/space-time-analysis-for-cybersecurity).

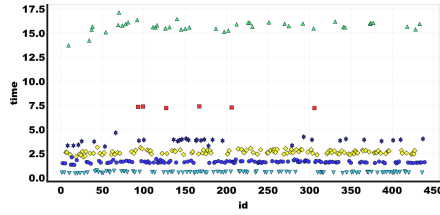


Fig. 1. Cluster running times from the SnapBuddy to produce labels. The scatter plot shows a differential corresponding to a possible timing side-channel.

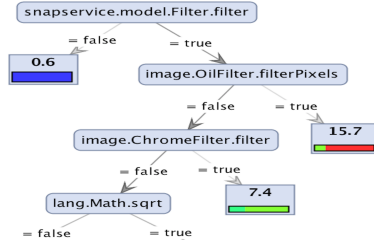


Fig. 2. Snippet of a decision-tree discriminant learned from SnapBuddy traces using the timing labels from Figure 1.

executed over an instrumented version of the SnapBuddy server to record the number of times each method in the application is called by the trace. As a result, we obtain a set of traces with their (uninstrumented) overall running times and set of corresponding method calls.

Then DISCRIMINER uses the standard *CART* decision tree learning algorithm [5] to infer a decision tree that succinctly represents a discriminant using atomic predicates that characterize whether or not the trace invoked a particular method (shown in Figure 2). For instance, the cluster representing the longest running time (around 15 seconds) is discriminated by the property `snapservice.model.Filter.filter` \wedge `image.OilFilter.filterPixels`, indicating that the two methods are both invoked by the trace. Likewise, the cluster representing the running time around 7.5 seconds is discriminated by the property `snapservice.model.Filter.filter` \wedge \neg `image.OilFilter.filterPixels` \wedge `image.ChromeFilter.filter`, indicating that `image.OilFilter.filterPixels` must not be invoked while the other two must be.

The analyst might now suspect what is going on: the timing differences are caused by the filters that each user chooses to apply to their picture. Note that the analyst running DISCRIMINER did not need to know that the filters are important for causing this time differential, or even that they existed. The tool discovers them simply because the trace contains all method calls, and the decision tree learning algorithm produces a useful discriminant.

A possible fix now suggests itself: make sure that the execution of each type of filter takes the same amount of time (though of course an implementation of such a fix still requires development effort). Overall, the example demonstrates how the decision tree produced by DISCRIMINER can be used to debug (and potentially fix) side-channel vulnerabilities.

3 Trace-Set Discrimination Problem

A *discrete probability distribution*, or just distribution, over a finite set L is a function $d : L \rightarrow [0, 1]$ such that $\sum_{\ell \in L} d(\ell) = 1$. Let $\mathcal{D}(L)$ denote the set of all discrete distributions over L .

Let p_1, \dots, p_m represent a set of *atomic predicates* over traces. Each predicate evaluates to a Boolean value over a given trace. Therefore, for simplicity, we represent a trace simply by the truth valuations of the predicates over the trace. In addition to atomic predicates, traces are associated with a distribution over labels. These distributions are generated by first measuring the execution time t of the trace. The execution time is obtained as the average over some fixed number of measurements $M > 0$. Therefore, the timing is taken to be a Gaussian random variable with mean t and a standard deviation σ_t . Using this information, we derive a discrete distribution $d \in \mathcal{D}(L)$ over the set of labels in L .

Definition 1 (Traces, Predicates and Label Distributions). *An execution trace T of the program is a tuple $\langle \tau, d \rangle$ wherein $\tau = \langle \rho_1, \dots, \rho_m \rangle$ represents the truth valuations to the predicates p_1, \dots, p_m , respectively and $d \in \mathcal{D}(L)$ is the associated label distribution over the finite set of labels L .*

We define a *trace discriminant* as a tuple of Boolean formulae that predict the labels of the traces given the truth valuations in the following fashion.

Definition 2. *Given a set of labels $L = \{\ell_1, \dots, \ell_K\}$ and predicates $P = \{p_1, \dots, p_m\}$, a **discriminant** Ψ is a tuple $\langle \varphi_1, \dots, \varphi_K \rangle$ of Boolean formulae where each formula φ_i is over the predicates in P and corresponds to a label ℓ_i .*

A trace $\langle \tau, d \rangle$ receives a label ℓ_k under trace discriminant $\Psi = \langle \varphi_1, \dots, \varphi_K \rangle$, and we write $\text{LABEL}(\langle \tau, d \rangle, \Psi) = \ell_k$, if k is the smallest index $1 \leq i \leq K$ such that $\tau \models \varphi_i$, i.e. φ_i evaluates to **true** for the truth valuation τ . Formally,

$$\text{LABEL}(\langle \tau, d \rangle, \Psi) = \begin{cases} \ell_1 & \text{if } \tau \models \varphi_1, \text{ else} \\ \ell_2 & \text{if } \tau \models \varphi_2, \text{ else} \\ \vdots & \vdots \\ \ell_K & \text{if } \tau \models \varphi_K. \end{cases}$$

Definition 3. *Given a set of predicates $\{p_1, \dots, p_m\}$, set of labels $\{\ell_1, \dots, \ell_K\}$, and a set of traces $\{\langle \tau_1, d_1 \rangle, \dots, \langle \tau_N, d_N \rangle\}$, the **trace set discriminant problem** (TDLP) is to learn a trace discriminant $\Psi = \langle \varphi_1, \dots, \varphi_K \rangle$.*

In general, there are numerous possible discriminants that can be inferred for a given instance of the TDLP. We consider two approaches in this paper: (a) a *formal* maximum likelihood learning model over a structured set of discriminants and (b) an informal decision tree learning approach to maximize accuracy while minimizing the discriminant size.

3.1 Maximum Likelihood Learning

Given a discriminant and a set of traces, we define the likelihood of the discriminant as the probability that each trace $\langle \tau_i, d_i \rangle$ receives the label $\text{LABEL}(\langle \tau_i, d_i \rangle, \Psi)$ dictated by the discriminant.

Definition 4. The *likelihood* $\lambda(\Psi)$ of a discriminant Ψ over a set of traces $\{\langle\tau_1, d_1\rangle, \dots, \langle\tau_N, d_N\rangle\}$ is given by $\lambda(\Psi) = \prod_{i=1}^N d_i(\text{LABEL}(\langle\tau_i, d_i\rangle, \Psi))$.

The *maximum likelihood* discriminant Ψ_{ml} is defined as the discriminant amongst all possible Boolean formulae that maximizes $\lambda(\Psi)$, i.e. $\Psi_{ml} = \text{argmax}_{\Psi}(\lambda(\Psi))$. This maximization runs over the all possible tuples of K Boolean formulae over m atomic predicates, i.e, a space of $(K!) \binom{2^m}{K}$ possible discriminants! In particular, Hyafil and Rivest [11] show that the problem of learning optimal decision trees is NP-hard. Therefore, for our formal approach, we consider the following simpler class of discriminants by restricting the form of the Boolean formulae φ_j that make up the discriminants to monotone conjunctive formulae.

Definition 5 (Conjunctive Discriminants). A monotone conjunctive formula over predicates $P = \{p_1, \dots, p_m\}$ is a finite conjunction of the form $\bigwedge_{j=1}^r p_{i_j}$ such that $1 \leq i_1, \dots, i_r \leq m$. A discriminant $\Psi = \langle\varphi_1, \dots, \varphi_K\rangle$ is a (monotone) conjunctive discriminant if each φ_i is a monotone conjunctive formula for $1 \leq i \leq K$. In order to make a traces discriminant exhaustive, we assume φ_K to be the formula **true**.

The number of conjunctive discriminants is $(K-1)! \binom{2^m}{K-1}$. However, they can be easily represented and learned using SAT or ILP solvers, as shown subsequently. Moreover, working with simpler monotone conjunctive discriminants is preferable [8] in the presence of noisy data, as using formal maximum likelihood model to learn arbitrary complex Boolean function would lead to over-fitting. The problem of *maximum likelihood* conjunctive discriminant is then naturally defined. We refine the result of [11] in our context to show that the problem of learning (monotone) conjunctive discriminants is already NP-hard.

Theorem 1. Given an instance of TDLP, the problem of finding the maximum likelihood conjunctive discriminant is NP-hard.

Proof. We prove the NP-hardness of the problem of finding maximum likelihood conjunctive discriminant by giving a reduction from the *minimum weight monotone SAT problem* that is already known to be NP-hard. Recall that a monotone Boolean formula is propositional logic formula where all the literals are positive. Given a monotone instance of SAT $\phi = \bigwedge_{j=1}^n C_j$ over the set of variable $X = \{x_1, \dots, x_m\}$, the minimum weight monotone SAT problem is to find a truth assignment satisfying ϕ with as few variables set to **true** as possible.

Consider the trace-set discrimination problem P_ϕ where there is one predicate p_i per variable $x_i \in X$ of ϕ , two labels ℓ_1 and ℓ_2 , and the set of traces such that

- there is one trace $\langle\tau_j, d_j\rangle$ per clause C_j of ϕ such that predicate p_i evaluates to true in the trace τ_j if variable x_i does not occur in clause C_j , and the label distribution d_j is such that $d_j(\ell_1) = 0$ and $d_j(\ell_2) = 1$.
- there is one trace $\langle\tau^i, d^i\rangle$ per variable x_i of ϕ such that only the predicate p_i evaluates to false in the trace τ^i and the label distribution d^i is such that $d^i(\ell_1) = 1 - \varepsilon$ and $d^i(\ell_2) = \varepsilon$ where $0 < \varepsilon < \frac{1}{2}$.

Observe that for every truth assignment (x_1^*, \dots, x_m^*) to variables in X , there is a conjunctive discriminant $\bigwedge_{x_i^*=1} p_i$ such that if the clause C_j is satisfied then the trace $\langle \tau_j, d_j \rangle$ receives the label ℓ_2 . This implies that the likelihood of the discriminant is non-zero only for the discriminant corresponding to satisfying valuations of ϕ . Moreover, for every variable x_i receiving a true assignment, the trace $\langle \tau^i, d^i \rangle$ receives the label ℓ_2 with ε contributed to the likelihood term and for every variable x_i receiving false assignment, the trace $\langle \tau^i, d^i \rangle$ receives the label ℓ_1 with $1 - \varepsilon$ being contributed to the likelihood. This construction implies that a maximum likelihood discriminant should give label ℓ_2 to all of the traces $\langle \tau_j, d_j \rangle$ and label ℓ_1 to as many traces in $\{\tau^i, d^i\}$ as possible. It is easy to verify that there exists a truth assignment of size k for ϕ if and only if there exists a conjunctive discriminant in P_ϕ with likelihood $\prod_{i=1}^k \varepsilon \cdot \prod_{i=1}^{m-k} (1 - \varepsilon)$. \square

3.2 Decision Tree Learning

As noted earlier, the max likelihood approach over structured Boolean formulae can be prohibitively expensive when the number of traces, predicates and labels are large. An efficient alternative is to consider decision tree learning approaches that can efficiently produce accurate discriminants while keeping the size of the discriminant as small as possible. The weighted accuracy of a discriminant Ψ over traces $\langle \tau_i, d_i \rangle, i = 1, \dots, N$ is defined additively as $\alpha(\Psi) : \frac{1}{N} \sum_{i=1}^N d_i(\text{LABEL}(\langle \tau_i, d_i \rangle, \Psi))$. This accuracy is a fraction between $[0, 1]$ with higher accuracy representing a better discriminant.

A decision tree learning algorithm seeks to learn a discriminant as a decision tree over the predicates p_1, \dots, p_m and outcome labels ℓ_1, \dots, ℓ_K . Typically, algorithms will maximize $\alpha(\Psi)$ while keeping the description length $|\Psi|$ as small as possible. A variety of efficient tree learning algorithms have been defined including ID3 [16], CART [6], CHAID [12] and many others [15, 19]. These algorithms have been supported by popular machine learning tools such as Scikit-learn python library (<http://scikit-learn.org/stable/>) and RapidMiner [2].

4 Discriminant Analysis

In this section, we provide details of max likelihood and decision tree approaches, and compare their performances over a scalable set of micro-benchmarks.

4.1 Maximum Likelihood Approach

We now present an approach for inferring a conjunctive discriminant Ψ using integer linear programming (ILP) that maximizes the likelihood $\lambda(\Psi)$ for given predicates p_1, \dots, p_m , labels ℓ_1, \dots, ℓ_K and traces $\langle \tau_1, d_1 \rangle, \dots, \langle \tau_N, d_N \rangle$. This problem was already noted to be NP-hard in Theorem 1.

We first present our approach for the special case of $K = 2$ labels. Let ℓ_1, ℓ_2 be the two labels. Our goal is to learn a conjunctive formula φ_1 for ℓ_1 . We use binary decision variables x_1, \dots, x_m wherein $x_i = 1$ denotes that φ_1 has the predicate

p_i as a conjunct, whereas $x_i = 0$ denotes that p_i is not a conjunct in φ_1 . Also we add binary decision variables w_1, \dots, w_N corresponding to each of the N traces, respectively. The variable $w_i = 1$ denotes that the trace $\langle \tau_i, d_i \rangle$ receives label ℓ_2 under φ_1 and $w_i = 0$ indicates that the trace receives label ℓ_1 . The likelihood of the discriminant Ψ can be given as $\lambda(\Psi) \stackrel{\text{def}}{=} \prod_{i=1}^N \begin{cases} d_i(\ell_1) & \text{if } w_i = 0 \\ d_i(\ell_2) & \text{if } w_i = 1 \end{cases}$. Rather than maximize $\lambda(\Psi)$, we equivalently maximize $\log(\lambda(\Psi))$

$$\log(\lambda(\Psi)) = \sum_{i=1}^N \begin{cases} \log(d_i(\ell_1)) & \text{if } w_i = 0 \\ \log(d_i(\ell_2)) & \text{if } w_i = 1 \end{cases}.$$

Let $r_i := d_i(\ell_1) = 1 - d_i(\ell_2)$, and simplify the expression for $\log(\lambda(\Psi))$ as $\sum_{i=1}^N (1 - w_i) \log(r_i) + w_i \log(1 - r_i)$.

Next, the constraints need to relate the values of x_i to each w_i . Specifically, let for each trace $\langle \tau_i, d_i \rangle$, $R_i \subseteq \{p_1, \dots, p_m\}$ denote the predicates that are valued *false* in the trace. We can verify that if $w_i = 0$, then none of the predicates in R_i can be part of φ_1 , and if $w_i = 1$, at least one of the predicates in R_i must be part of φ_1 . This is expressed by the following inequality $\frac{1}{|R_i|} (\sum_{p_k \in R_i} x_k) \leq w_i \leq \sum_{p_k \in R_i} x_k$. If any of the $p_k \in R_i$ is included in the conjunction, then the LHS of the inequality is at least $\frac{1}{|R_i|}$, forcing $w_i = 1$. Otherwise, if all p_k are not included, the RHS of the inequality is 0, forcing $w_i = 0$.

The overall ILP is given by

$$\begin{aligned} & \max \sum_{i=1}^N (1 - w_i) \log(r_i) + w_i \log(1 - r_i) \\ & \text{s.t.} \quad \frac{1}{|R_i|} (\sum_{p_k \in R_i} x_k) \leq w_i \quad i = 1, \dots, N \\ & \quad \quad w_i \leq \sum_{p_k \in R_i} x_k \quad i = 1, \dots, N \\ & \quad \quad x_j \in \{0, 1\}, w_i \in \{0, 1\} \quad i = 1, \dots, N, j = 1, \dots, m \quad (1) \end{aligned}$$

Theorem 2. *Let x_1^*, \dots, x_m^* denote the solution for ILP (1) over a given TDLP instance with labels $\{\ell_1, \ell_2\}$. The discriminant $\Psi = \langle \varphi_1, \mathbf{true} \rangle$ wherein $\varphi_1 = \bigwedge_{x_i^*=1} p_i$ maximizes the likelihood $\lambda(\Psi)$ over all conjunctive discriminants.*

With the approach using the ILP in Eq. (1), we can tackle an instance with $K > 2$ labels by recursively applying the two label solution. First, we learn a formula φ_1 for ℓ_1 and $L \setminus \ell_1$. Next, we eliminate all traces that satisfy φ_1 and eliminate the label ℓ_1 . We then recursively consider $\hat{L} : L \setminus \ell_1$ as the new label set. Doing so, we obtain a discriminant $\Psi : \langle \varphi_1, \varphi_2, \dots, \varphi_{K-1}, \mathbf{true} \rangle$.

In theory, the ILP in (1) has $N + m$ variables, which can be prohibitively large. However, for the problem instances considered, we drastically reduced the problem size through standard preprocessing/simplification steps that allowed us to resolve the values of x_i, w_j for many of the variables to constants.

4.2 Decision Tree Learning Approach

In order to discriminate traces, DISCRIMINER employs decision tree learning to learn classifiers that discriminate the traces. Given a set of N traces on a

dependent variable (labels) L that takes finitely-many values in the domain $\{\ell_1, \dots, \ell_K\}$ and m feature variables (predicates) $F = \{f_1, \dots, f_m\}$, the goal of a classification algorithm is to produce a partition the space of the feature variables into K disjoint sets A_1, \dots, A_K such that the predicted value of L is i if the F -variables take value in A_i . Decision-tree methods yield rectangular sets A_i by recursively partitioning the data set one F variable at a time. CART (*Classification and Regression Trees*) is a popular and effective algorithm to learn decision-tree based classifiers. It constructs binary decision trees by iteratively exploring features and thresholds that yield the largest information gain (Gini index) at each node. For a detailed description of the CART, we refer to [5].

4.3 Performance Evaluation

We created a set of micro-benchmarks—containing a side-channel in time—to evaluate the performance of the decision-tree discriminator computed using *scikit-learn* implementation of CART and the maximum likelihood conjunctive discriminant using an ILP implementation from the GLPK library.

These micro-benchmarks consist of a set of programs that take as an input a sequence of binary digits (say a secret information), and perform some computation whose execution time (enforced using `sleep` commands) depends on some property of the secret information. For the micro-benchmark series `LSB0` and `MSB0`, the execution time is a Gaussian-distributed random variable whose mean is proportional to the position of least significant 0 and most significant 0 in the secret, respectively. In addition, we have a micro-benchmark series `Patd` whose execution time is a random variable whose mean depends upon the position of the pattern d in the input. For instance, the micro-benchmark `Pat101` takes a 20-bit input data and the leftmost occurrence i of the pattern 101 executes three methods F_i, F_{i+1}, F_{i+2} with mean exec. time of a method F_j being $10*j$ ms.

In our experiments with micro-benchmarks, we generate the dataset by randomly generating the input. For each input, we execute the benchmark programs 10 times to approximate the mean and the standard deviation of the observation, and log the list of method called for each such input. For a given set of execution traces, we cluster the execution time based on their mean and assign weighted labels to each trace according to Gaussian distribution. We defer the details of this data collection to Section 5. Our dataset consists of trace id, label, weight, and method calls for every execution trace. We use this common dataset to both the decision-tree and the maximum likelihood algorithms.

Table 1 shows the performance of the decision-tree classifiers and the maximum likelihood approach for given micro-benchmarks. The table consists of benchmark scales (based on the number of methods and traces), the accuracy of approaches, time of computing decision tree and maximum likelihood discriminant, the height of decision tree, and the maximum number of conjuncts among all learned discriminants in the maximum likelihood approach. In order to compute the performance of both models and avoid overfitting, we train and test data sets using group k -fold cross-validation procedure with k set to 20.

Table 1. Micro-benchmark results for decision-tree discriminators learned using decision tree and the max-likelihood approach. Legend: **#M**: number of methods, **#N**: number of traces, **T**: computation time in seconds, **A**: accuracy, **H**: decision-tree height, **M**: max. discriminant size (Max. # of conjuncts in discriminants), $\epsilon < 0.1$ sec.

Benchmark ID	# M	#N	Decision Tree			Max-Likelihood		
			T	A	H	T	A	M
LSB0	10	188	ϵ	100%	7	ϵ	100 %	10
MSB0	10	188	ϵ	100%	7	ϵ	100 %	10
Pat ₁₀₁	20	200	ϵ	100%	13	0.2	89.4%	20
Pat ₁₀₁₀	50	500	ϵ	98.4%	22	1.3	93.6%	50
Pat ₁₀₁₁₁	80	800	0.1	97.8%	37	8.1	94.8%	72
Pat ₁₀₁₀₁	100	1000	0.2	92.9%	43	9.8	87.9%	86
Pat ₁₀₀₁₁	150	1500	0.5	89.2%	44	45.0	91.5%	118
Pat ₁₀₁₀₁₁	200	2000	0.8	92.1%	50	60.2	90.9%	156
Pat ₁₀₁₀₁₀₁	400	4000	4.2	88.6%	111	652.4	92.9%	294

Table 1 shows that both decision tree and max-likelihood approaches have decent accuracy in small and medium sized benchmarks. On the other hand, decision tree approach stands out as highly scalable: it takes only 4.2 seconds for the decision-tree approach to building a classifier for the benchmark Pat₁₀₁₀₁₀₁ with 400 methods and 4000 traces, while it takes 652.4 seconds for the max-likelihood approach to constructing the discriminants. Table 1 shows that the discriminants learned using decision tree approach are simpler than the ones learned using max-likelihood approach requiring a fewer number of tests.

5 Case Study: Understanding Traces with Decision Trees

The data on microbenchmarks suggest that the decision tree learning approach is more scalable and has comparable accuracy as the max-likelihood approach. Therefore, we consider three case studies to evaluate whether the decision tree approach produces useful artifacts for debugging program vulnerabilities.

Research Question. We consider the following question:

Does the learned discriminant pinpoint code fragments that explain differences in the overall execution times?

We consider this question to be answered positively if we can identify an explanation for timing differences (which can help debug to side channel or availability vulnerabilities) through DISCRIMINER².

Methodology. We consider the discriminant analysis approach based on decision tree learning from Section 4. Table 2 summarizes the particular instantiations for the discriminant analysis that we consider here.

Attributes: Called Methods. For this case study, we are interested in seeing whether the key methods that explain the differences in execution time can

² <https://github.com/cuplv/Discriminer>

be pinpointed. Thus, we consider attributes corresponding to the called methods in a trace. In order to collect information regarding the called methods, we instrumented Java bytecode applications using Javassist analysis framework (<http://jboss-javassist.github.io/javassist/>).

Class Label: Total Execution Time Ranges. To identify the most salient attributes, we fix a small number of possible labels, and cluster traces according to total execution time. Each cluster is defined by a corresponding time interval. The clusters and their intervals are learned using k -means clustering algorithm.

We consider the execution time for each trace to be a random variable and assume a normal distribution. We obtain the mean and variance through 10 repeated measurements. We apply clustering to the mean execution times of each trace to determine the class labels. Henceforth, when we speak of the execution time of a trace, we refer to the mean of the measurements for that trace.

A class label (or cluster) can be identified by the mean of all execution times belonging to that cluster. Then, considering the class labels sorted in increasing order, we define the lower boundary of a bucket for classifying new traces by averaging the maximum execution time in the previous bucket and the minimum execution time in this bucket (and analogously for the upper boundary).

Weighted Labeling of Traces. Given a set of time ranges (clusters), we define a weighted labeling of traces that permits a trace to be assigned to different clusters with different weights. For a given trace, the weights to clusters are determined by the probability mass that belongs to the time range of the cluster. For example, consider a sample trace whose execution-time distribution straddles the boundary of two clusters C_0 and C_1 , with 22% area of the distribution intersecting with cluster C_0 and 78% with cluster C_1 . In this case, we assign the trace to both clusters C_0 and C_1 with weights according to their probability mass in their respective regions. Note that this provides a smoother interpretation of the class labels rather than assigning the most likely label.

Decision Tree Learning. From a training set with this weighted labeling, we apply the weighted decision tree learning algorithm CART described in Sec. 4. We use DISCRIMINER both for clustering in the time domain as described above to determine the class labels and weights of each trace and for learning the classification model. We use group k -fold cross validation procedure to find accuracy.

Table 2. Parameters for trace set discriminant analysis, which predicts a class label based on attributes. Here, we wish to discriminate traces to predict the total execution time of the trace based on the methods called in the trace and the number of times each method is called. To consider a finite number of class labels, we fix a priori n possible time ranges based on choosing the best number of clustering.

attributes	(1) the methods called in the trace (Boolean) (2) the number of times each method is called in a trace (integer)
class label	a time range for the total execution time of the trace
number of classes	6, 6, and 2 for SnapBuddy, GabFeed, and TextCrunchr

Objects of Study. We consider three programs drawn from benchmarks provided by the DARPA STAC project. These medium-sized Java programs were developed to be realistic applications that may potentially have timing side-channel or availability security vulnerabilities. SnapBuddy is a web application for social image sharing. The profile page of a user includes their picture (with a filter). The profile page is publicly accessible. GabFeed is a web application for hosting community forums. Users and servers can mutually authenticate using public-key infrastructure. TextCrunchr is a text analysis program capable of performing standard text analysis including word frequency, word length, and so on. It uses sorting algorithms to perform the analysis.

In the inset table, we show the basic characteristics of these benchmarks. The benchmarks, in total, consist of 3,971 methods. From these programs, we generated 987 traces by using a component of each applications web API (scripted via `curl`). In these recorded traces, we observed 225 distinct methods called. Note that some methods are called thousands to millions of times.

program	total methods (num)	total traces (num)	observed methods (num)
SnapBuddy	3071	439	160
GabFeed	573	368	30
TextCrunchr	327	180	35
total	3971	987	225

Decision Trees Produced by DISCRIMINER. In Fig. 3(b)–(d)–(f), we show the decision tree learned from the SnapBuddy, GabFeed, and TextCrunchr traces, respectively. As a decision tree is interpreted by following a path from the root to a leaf where the leaf yields the class label and the conjunction of the internal nodes describes the discriminator, one can look for characteristics of discriminated trace sets by following different paths in the tree. The class labels at leaves are annotated with the bucket’s mean time. For example, in (b), the label 15.7 shows that the path to this label which calls `image.OilFilter.filterPixels` takes 15.7 seconds to execute. The colors in bars in the leaves represent the actual labels of the training traces that would be classified in this bucket according to the learned discriminator. Multiple colors in the bars mean that a discriminator, while not perfectly accurate on the training traces, is also able to tolerate noise. The height of the bar gives an indication of the number of training traces following this discriminator. The scatter plots in (a)–(c)–(e) show the time of each trace, with the color indicating the corresponding cluster.

Findings for SnapBuddy. For SnapBuddy, the traces exercise downloading the public profile pages of all user from a mock database. We have explained in Sec. 2 how clustering (in Fig. 3(a)) helps to identify a timing side-channel, and how the decision tree (in Fig. 3b) helps in debugging the vulnerability.

Findings for GabFeed. *Inputs.* For GabFeed, the traces exercise the authentication web API by fixing the user public key and by sampling uniformly from the server private key space (3064-bit length keys). *Identifying a Timing Side-Channel with Clustering.* Considering scatter plot of GabFeed in Fig. 3c (bound-

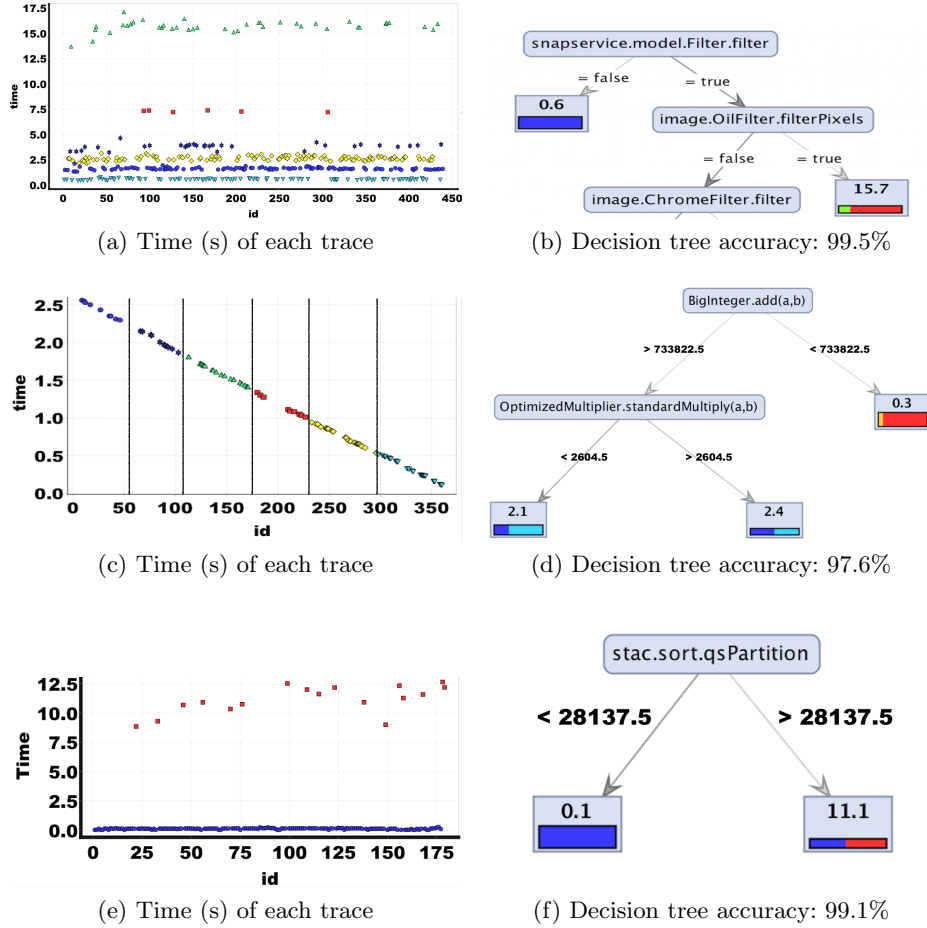


Fig. 3. Clustering in the time domain (a)-(c)-(e) to learn decision tree classification models (b)-(d)-(f). The upper row corresponds to SnapBuddy traces, the middle row corresponds GabFeed traces, while the bottom row corresponds to TextCrunchr traces.

aries show different clusters), we can see less definitive timing clusters. However, it shows timing differences that indicate a side channel. *Debugging Timing Side-Channels with Decision Tree Learning*. The (part of) decision tree for GabFeed in Fig. 3d is also less definitive than for SnapBuddy as we might expect given the less well-defined execution time clusters. However, the part of the decision tree discriminants `OptimizedMultiplier.standardMultiply` for time differences. Note that the attributes on the outgoing edge labels correspond to a range for the number of times a particular method is called. The decision tree explains that the different number of calls for `OptimizedMultiplier.standardMultiply` leads to different time buckets. By going back to the source code, we observed

that `standardMultiply` is called for each 1-bit in the server’s private key. The method `standardMultiply` is called from a modular exponentiation method called during authentication. What leaks is thus the number of 1s in the private key. A potential fix could be to rewrite the modular exponentiation method to pad the timing differences.

Findings for TextCrunchr. *Inputs.* For TextCrunchr, we provided four types of text inputs to analyze timing behaviors: sorted, reverse-sorted, randomly generated, and reversed-shuffled arrays of characters (reverse-shuffle is an operation that undoes a shuffle that TextCrunchr performs internally). It is the reverse shuffled inputs that lead to high execution time. Although the input provided to DISCRIMINER for analyzing TextCrunchr include carefully crafted inputs (reversed shuffled sorted array), it can be argued that a system administrator interested in auditing a security of a server has access to a log of previous inputs including some that resulted in high execution time. *Identifying Availability Vulnerabilities with Clustering.* Considering scatter plot of TextCrunchr in Fig. 3e we can see well-defined timing clusters which can potentially lead to security issues. It shows that a small fraction of inputs takes comparably higher time of execution in comparison to the others. Thus an attacker can execute a denial-of-service (availability) attack by repeatedly providing the costly inputs (for some inputs, it will take more than 600 seconds to process the text). The system administrator mentioned above probably knew from his logs about possible inputs with high execution time. What he did not know is why these inputs lead to high execution time. *Debugging Availability Vulnerabilities with Decision Tree Learning.* The decision tree for TextCrunchr in Fig. 3f shows that the number of calls on `stac.sort.qsPartition` as the explanation for time differences (out of 327 existing methods in the application). This can help identify the sorting algorithm (Quicksort) used as a source of the problem and leads to the realization that certain inputs trigger the worst-case execution time of Quicksort.

Threats to Validity. These case studies provide evidence that decision tree learning helps in identifying code fragments that correlate with differential execution time. Clearly, the most significant threat to validity is whether these programs are representative of other applications. To mitigate, we considered programs not created by us nor known to us prior to this study. These applications were designed to faithfully represent real-world Java programs—for example, using Java software engineering patterns and best practices. Another threat concerns the representativeness of the training sets. To mitigate this threat, we created sample traces directly using the web interface for the whole application, rather than interposing at any intermediate layer. This interface is for any user of these web applications and specifically the interface available to a potential attacker. A training set focuses on exercising a particular feature of the application, which also corresponds to the ability of an attacker to build training sets specific to different features of the application.

6 Related Work

Machine learning techniques have been used for *specification mining*, that is, for learning succinct representations of the set of all program traces. Furthermore, machine learning techniques have been applied to learn classifiers of programs for *malware detection* and for *software bug detection*.

Specification Mining. In [3], machine learning techniques are used to synthesize an NFA (nondeterministic finite automaton) that represents all the correct traces of a program. In our setting, this would correspond to learning a discriminant for one cluster (of correct traces). In contrast, our decision trees discriminate multiple clusters. However, the discriminants we considered in this paper are less expressive than NFAs. The survey [22] provides an overview of other specification mining approaches.

Malware and Bug Detection. In malware detection, machine learning techniques are used to learn classifiers that classify programs into benign and malicious [1, 4, 7, 10, 13, 17, 21]. In software bug detection, the task is to learn classifiers that classify programs behaviors into faulty and non-faulty [9, 14, 18, 20]. In contrast, we consider more clusters of traces. In particular, Lo et al. [14] constructs a classifier to generalize known failures of software systems and to further detect (predict) other unknown failures. First, it mines iterative patterns from program traces of known normal and failing executions. Second, it applies a feature selection method to identify highly discriminative patterns which distinguish failing traces from normal ones.

In all these works, the training set is labeled: all the programs are labeled either benign or malicious (faulty or non-faulty). In contrast, we start with an unlabeled set of traces, and construct their labels by clustering in the time domain.

7 Conclusion

Summary. We introduced the trace set discrimination problem as a formalization of the practical problem of finding what can be inferred from limited run time observations of the system. We have shown that the problem is NP-hard, and have proposed two scalable techniques to solve it. The first is ILP-based, and it can give formal guarantees about the discriminant that was found but infers discriminants of a limited form. The second is based on decision trees, infers general discriminants, but does not give formal guarantees. For three realistic applications, our tool produces a decision tree useful for explaining timing differences between executions.

Future Work. There are several intriguing directions for future research. First, we will investigate the extension of our framework to reactive systems, by generalizing our notion of execution time observations to sequences of timed events. Second, we will build up the network traffic monitoring ability of our tool, to make it usable by security analysts for distributed architectures.

References

1. Yousra Aafer, Wenliang Du, and Heng Yin. DroidAPIMiner: Mining API-level features for robust malware detection in Android. In *SPCN*, pages 86–103, 2013.
2. Fareed Akthar and Caroline Hahne. Rapidminer 5 operator reference. *Rapid-I GmbH*, 2012.
3. Glenn Ammons, Rastislav Bodík, and James R. Larus. Mining specifications. In *POPL*, pages 4–16, 2002.
4. Michael Bailey, Jon Oberheide, Jon Andersen, Z Morley Mao, Farnam Jahanian, and Jose Nazario. Automated classification and analysis of internet malware. In *RAID*, pages 178–197, 2007.
5. L. Breiman, J. Friedman, R. Olshen, , and C. Stone. *Classification and Regression Trees*. Wadsworth, Belmont, CA, 1984.
6. L. Breiman, J.H. Friedman, R.A. Olshen, and C.I. Stone. *Classification and regression trees*. Wadsworth: Belmont, CA, 1984.
7. Iker Burguera, Urko Zurutuza, and Simin Nadjm-Tehrani. Crowdroid: behavior-based malware detection system for Android. In *Workshop on Security and privacy in smartphones and mobile devices*, pages 15–26, 2011.
8. Pedro Domingos. The role of Occam’s razor in knowledge discovery. *Data Mining and Knowledge Discovery*, 3(4):409–425, 1999. ISSN 1573-756X.
9. Karim O Elish and Mahmoud O Elish. Predicting defect-prone software modules using support vector machines. *Journal of Systems and Software*, 81(5):649–660, 2008.
10. Matt Fredrikson, Somesh Jha, Mihai Christodorescu, Reiner Sailer, and Xifeng Yan. Near-optimal malware specifications from suspicious behaviors. In *Security and Privacy (SP)*, pages 45–60, 2010.
11. Laurent Hyafil and Ronald L Rivest. Constructing optimal binary decision trees is np-complete. *Information Processing Letters*, 5(1):15–17, 1976.
12. G. V. Kass. An exploratory technique for investigating large quantities of categorical data. *Journal of the Royal Statistical Society. Series C (Applied Statistics)*, 29(2):119–127, 1980.
13. Clemens Kolbitsch, Paolo Milani Comparetti, Christopher Kruegel, Engin Kirda, Xiao-yong Zhou, and XiaoFeng Wang. Effective and efficient malware detection at the end host. In *USENIX Security*, pages 351–366, 2009.
14. David Lo, Hong Cheng, Jiawei Han, Siau-Cheng Khoo, and Chengnian Sun. Classification of software behaviors for failure detection: a discriminative pattern mining approach. In *SIGKDD*, pages 557–566, 2009.
15. Mehryar Mohri, Afshin Rostamizadeh, and Ameet Talwalkar. *Foundations of Machine Learning*. The MIT Press, 2012. ISBN 026201825X, 9780262018258.
16. J. Ross Quinlan. Induction of decision trees. *Machine Learning*, 1:81–106, 1986.
17. Konrad Rieck, Thorsten Holz, Carsten Willems, Patrick Düssel, and Pavel Laskov. Learning and classification of malware behavior. In *Detection of Intrusions and Malware, and Vulnerability Assessment*, pages 108–125. Springer, 2008.
18. Chengnian Sun, David Lo, Xiaoyin Wang, Jing Jiang, and Siau-Cheng Khoo. A discriminative model approach for accurate duplicate bug report retrieval. In *ICSE*, pages 45–54, 2010.
19. Pang-Ning Tan, Michael Steinbach, Vipin Kumar, et al. *Introduction to data mining*, volume 1. Pearson Addison Wesley Boston, 2006.
20. Westley Weimer and George C Necula. Mining temporal specifications for error detection. In *TACAS*, pages 461–476, 2005.

21. Dong-Jie Wu, Ching-Hao Mao, Te-En Wei, Hahn-Ming Lee, and Kuo-Ping Wu. Droidmat: Android malware detection through manifest and api calls tracing. In *JCIS*, pages 62–69, 2012.
22. Andreas Zeller. Specifications for free. In *NFM*, pages 2–12, 2011.